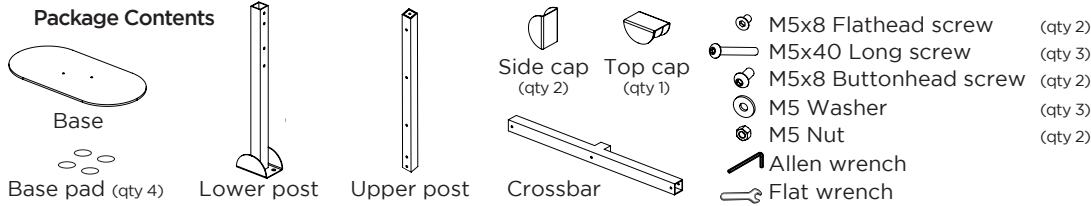


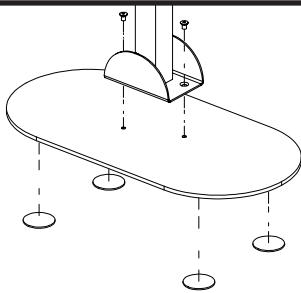
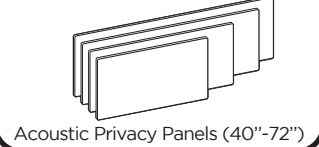
Freestanding Acoustic Privacy Panel

ACU015

UPLIFT ACOUSTICS®



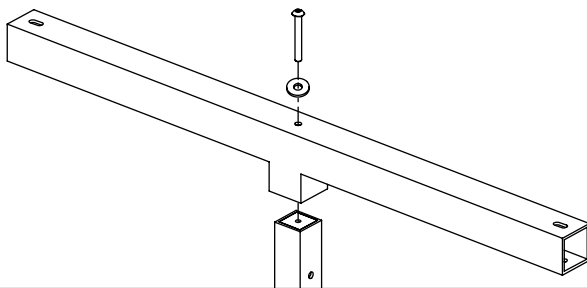
To be used with -



Step 1

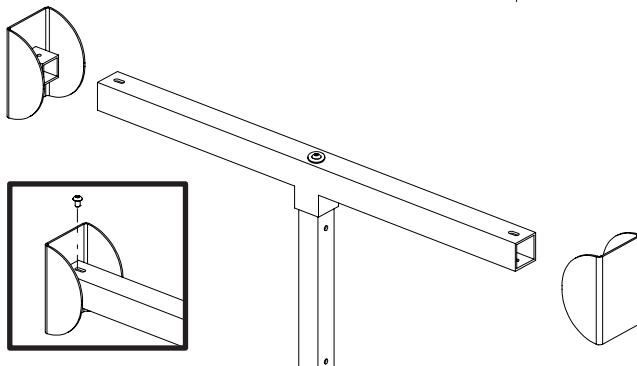
Line up the holes of the Lower post with the holes on the base. If they don't line up, flip the Base over. Connect the two parts together with two M5x8 Flathead screws.

Then apply the four Base pads to the bottom side of the Base.



Step 2

Fit the Crossbar onto the Upper post. Make sure each arm from the Crossbar extends over the sides of the post that has the holes. Connect the two parts together through the top of the Crossbar using a M5x40 Long screw and a M5 Washer.

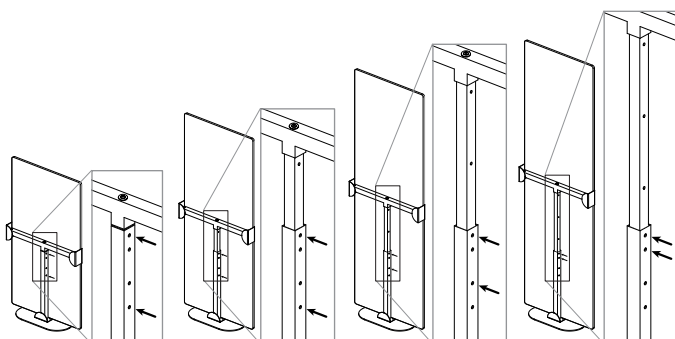


Step 3

Fit the Side caps onto each end of the Crossbar and attach using one M5x8 Buttonhead screw each.

Note: leave these screws slightly loose until Step 5

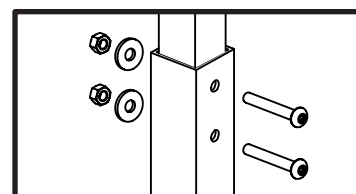
40" panel 52" panel 64" panel 72" panel

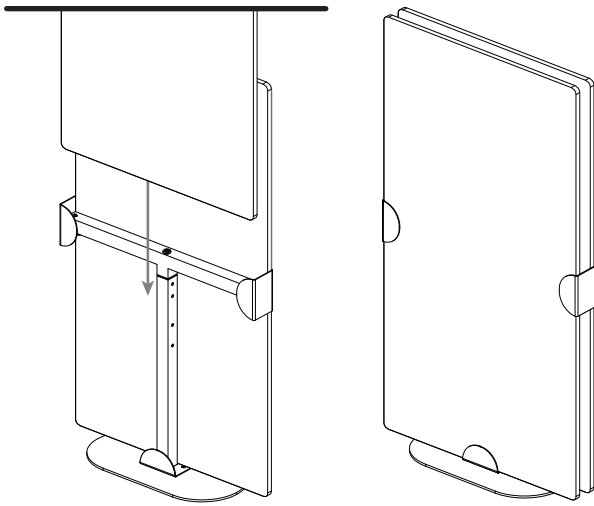


Step 4

Follow the diagrams at the left to set the height of the frame for the panel size.

Once the holes are aligned, insert two M5x40 Long screws through both posts where indicated by the arrows. On the other side of the post, install an M5 Washer and an M5 Nut on the other end of each screw. Hold the Nuts in place with the Flat wrench and tighten the Long screws using the Allen wrench until the upper post is secure.





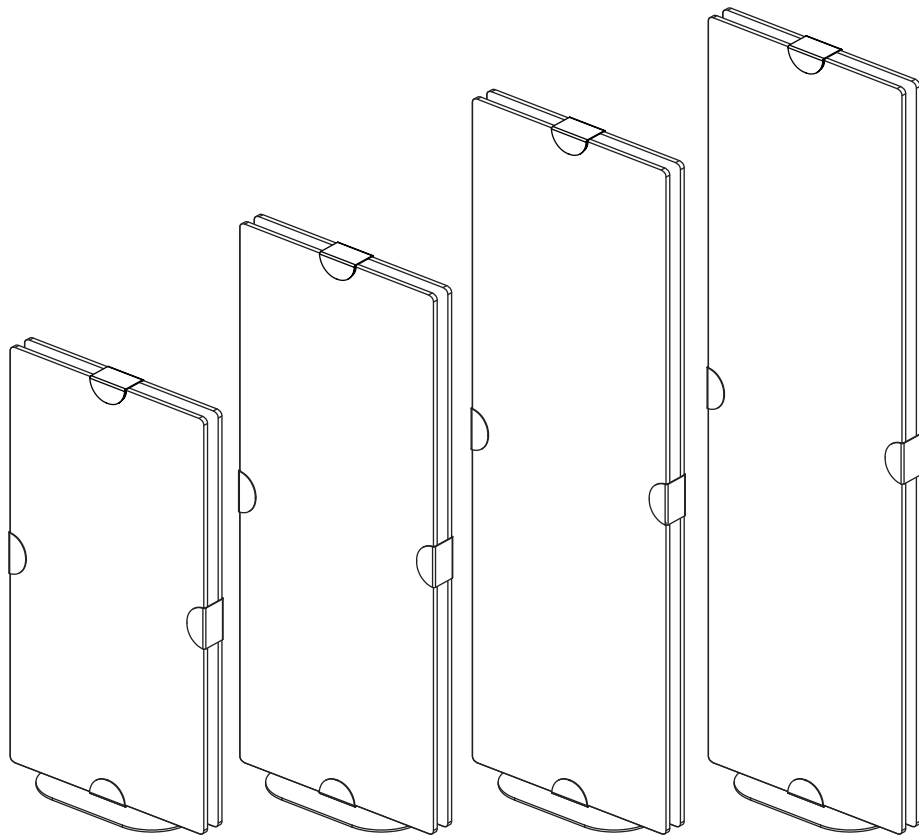
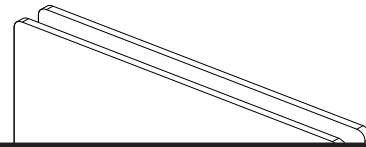
Step 5

Depending on ceiling height, you may need to tip the frame assembly on its side for this step.

When the frame height is set, slide one of the panels into one side of the frame through the Side caps and bottom of Lower post as shown. Once the first panel is in place, push the Side caps up against the edges of the panel and tighten the two screws from Step 3.

Then install the second panel in the same way as the first panel, but on the opposite side of the frame.

Finally, align the Top cap with the center of the tops of the panels and press into place so it is flush with the tops of the panels. This will keep the panels parallel and keep them from bowing over time.



⚠ CAUTIONS & WARNINGS

⚠ CAUTION: Read all instructions before assembly. Failure to assemble properly may result in damage or personal injury.

© **Copyright Notice:** This guide is a component of this accessory. This guide is a part of the scope of delivery, even if the item is resold. This guide is also available on the UPLIFT Desk website: upliftdesk.com. Excerpts or copies may not be forwarded to third parties or used in any other published form without the prior written consent of UPLIFT Desk. These instructions are subject to United States copyright law.