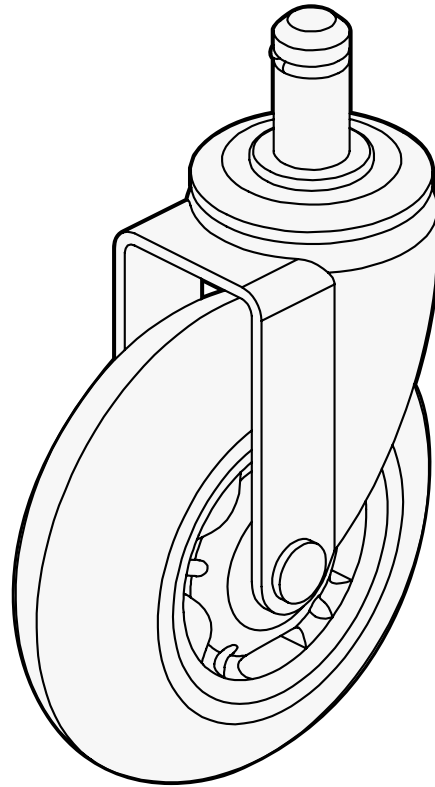


# Blade Chair Casters

ACC089

UPLIFT DESK

Work better. Live healthier.



## Safety and Warnings

**CAUTION:** Read all instructions before assembly. Failure to assemble or operate properly may result in damage or personal injury. Retain manual for future reference.

**CAUTION:** This maximum weight capacity of (5) Blade Chair Casters combined is 270 lb (122.5 kg).  
DO NOT exceed the maximum weight capacity of the Blade Chair Casters or the maximum weight capacity of the chair.

Under no circumstances does the manufacturer accept warranty or liability claims for damages caused from improper use of this product. Please provide these instructions to any new user or owner of the product.

**Save This Manual:** Study this manual carefully. If this product is sold, please provide this manual to the buyer, installers, or support personnel operating the product.

**Copyright Notice:** This manual is a component of this UPLIFT Desk product. This manual is a part of the scope of delivery, even if the item is resold. This manual is also available on the UPLIFT Desk website: [upliftdesk.com](https://upliftdesk.com). This manual is subject to United States copyright law.

For assembly assistance, visit [upliftdesk.com/contact](https://upliftdesk.com/contact), call 800-349-3839, or email [support@upliftdesk.com](mailto:support@upliftdesk.com)  
©2024 UPLIFT Desk®. All Rights Reserved

Scan QR code for  
product webpage



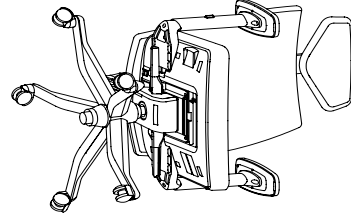
AI-ACC089-1.1

Blade Chair Casters are designed to be used on hard, smooth surfaces such as hardwood, laminate, tile, chair mats, etc.

If you have purchased the Blade Chair Casters with your chair, please follow the caster installation steps on the instructions received with your chair, using the Blade Chair Casters instead of the casters that came with the chair. If you have purchased the Blade Chair Casters to replace the original casters already installed on an assembled chair, please proceed to the following assembly steps.

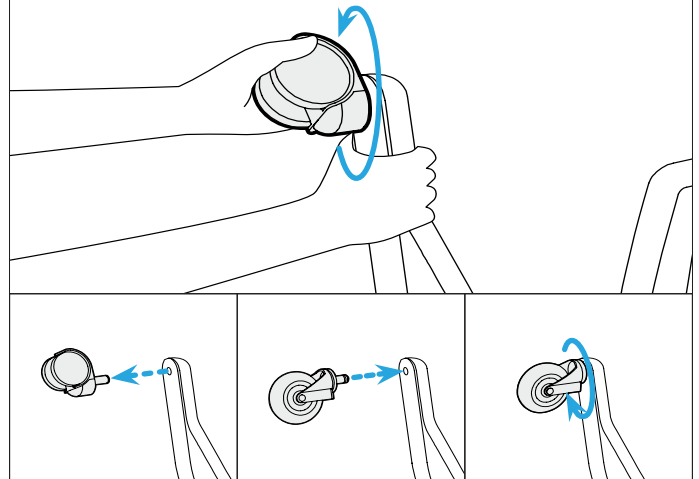
## Step 1

Carefully tip your chair so that it is laying with either its back or side resting on the floor providing access to the casters.



## Step 2

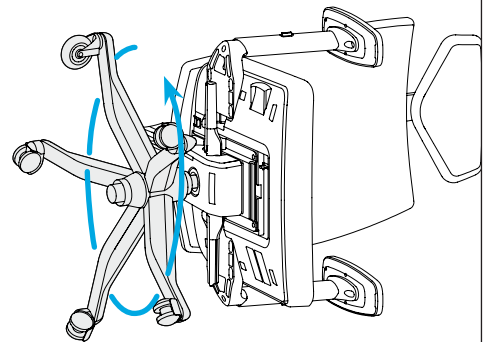
- Grip one of the casters tightly in one hand while holding the chair base with the other hand. It is easiest to start with the caster that is in the highest position and furthest away from the floor.
- While bracing the chair base with one hand, pull the caster firmly and directly away from the base. Caster stems are designed to fit tight in the chair base, so they can be difficult to remove. If you are having trouble gripping the caster, try using a glove or an old towel.
- Once the first caster has been removed, place it aside and locate one of the new Blade Chair Casters.
- Align the Blade Caster stem with the hole in the base where the original caster had been installed and press firmly until the Blade Caster is fully seated in the hole with no portion of the stem visible.



**NOTE:** If you are having trouble getting the grip ring at the top of the stem to fit in the hole in the chair base, try applying a small amount of a lubricant like WD-40 directly to the grip ring and/or compressing the grip ring with some pliers.

## Step 3

- Rotate the chair base so the next caster is in the highest position and follow Step 2 to replace the caster.
  - Repeat this process until all five Blade Casters have been installed in your chair.
- CAUTION:** Before turning the chair upright, inspect all casters one final time to ensure that all are fully inserted into the chair base and that none are loose.



## Step 4

- Carefully, return the chair to its upright position and inspect the casters one more time to ensure none of them came loose while raising the chair.
- Sit down in the chair with your feet flat on the floor and move the chair around a bit to confirm the casters are working properly and the chair is stable.

