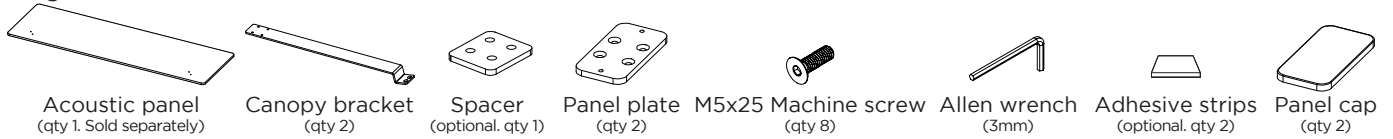


OneWall Canopy

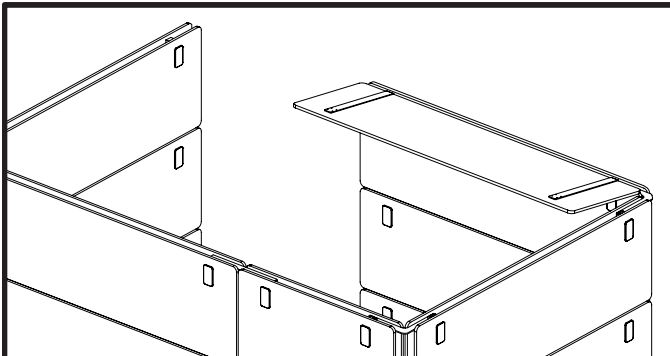
ACU013-CONNECT-CANOPY

UPLIFT ACOUSTICS®

Package Contents



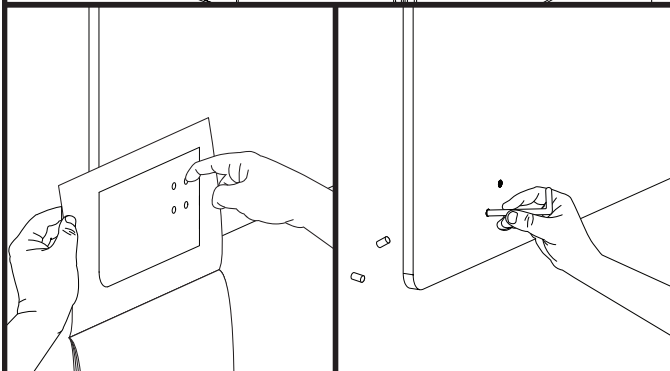
The Canopy is designed for Cubicles only.
Attaching the Canopy to a Mobile Wall could present a tipping hazard.



Notes Before Assembly

The Canopy is an add-on for your OneWall Acoustic Office Cubicle Partition. It provides a panel that hangs over your workspace to further reduce ambient noise and provide a more quiet space.

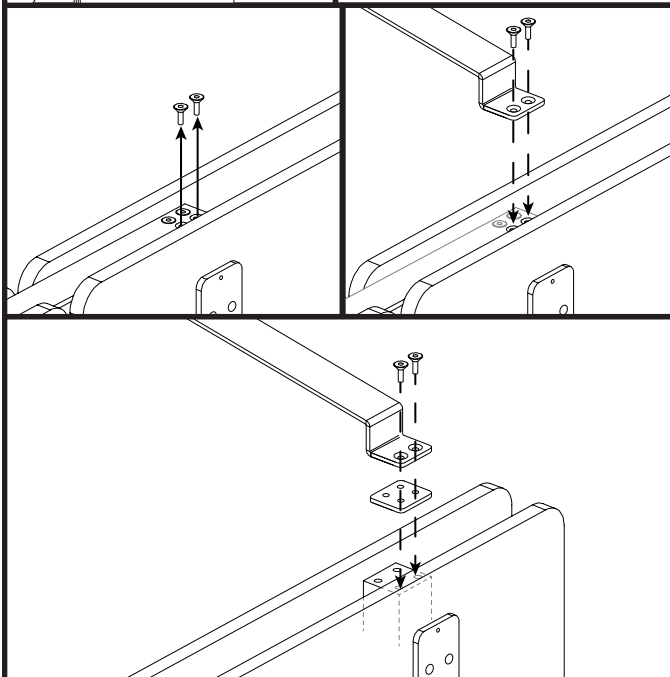
Before you begin, make sure that the panel used for the Canopy is the same width as the panels of the OneWall assembly to which you are attaching the Canopy.



Step 1

Prepare the Acoustic panels for assembly by removing the mounting hole plugs.

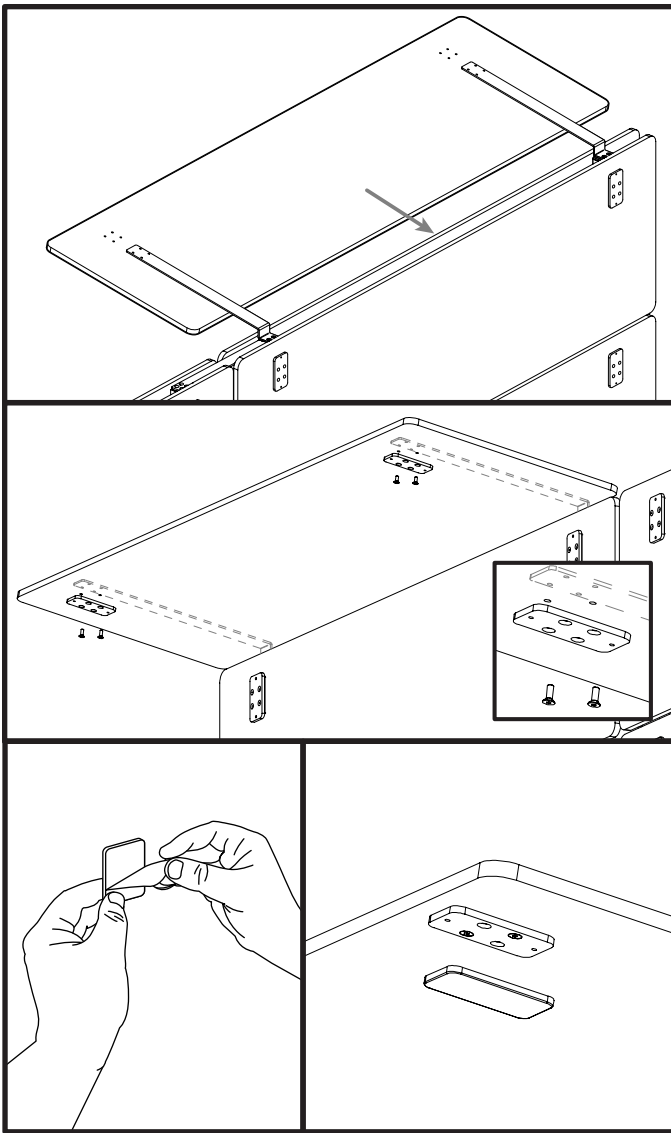
If you still have your instruction book from assembling your Cubicle, use the template from the center pages to help locate the holes. Line up the template along a corner on one of the long edges. Press at the set of holes opposite the corner. If that creates indentations making the hole locations visible, poke them out with the Allen wrench. If you don't see any indentations, try again on the other long edge.



Step 2

If a post already has a Cubicle connector attached to the top (L, S, T, or 4-Way), remove the two M5x25 screws opposite the side your Canopy will be located on. Place a Canopy bracket over the Cubicle connector bracket and replace the two removed screws through both brackets and into the top of the Post.

If a Post does not have a Cubicle connector attached to the top, place a Spacer on top of the Post and then a Canopy bracket over the Spacer and install two M5x25 screws through both pieces and into the top of the Post.



Step 3

Line up your Acoustic panel and a Panel plate with the holes on the Canopy bracket. Use the provided Allen wrench to poke through the Acoustic panel and Panel plate holes to help align them with the holes on the Canopy bracket.

Ensure the Panel plate is facing the correct way. The side with the countersunk holes should be facing toward you, so that the heads of the M5x25 Machine screws can fit.

Once lined up, insert a M5x25 Machine screw into each hole and tighten by hand for a few turns until both screws are started. Do not fully tighten the screws yet.

Repeat on the other side. Once all four screws are started, you can tighten using your Allen wrench. Tighten until snug, but do not over-tighten.

Step 4

When attaching Panel caps to the Canopy's Panel plates, we recommend using the Adhesive strips to hold them in place.

Peel off the backing on both sides of an Adhesive strip, and apply to the inside of the Panel cap. Then align a cap over each of the plates and press firmly in place.

⚠ CAUTIONS & WARNINGS

⚠ CAUTION: Read all instructions before assembly. Failure to assemble properly may result in damage or personal injury.

© **Copyright Notice:** This guide is a component of the UPLIFT Slim Drawer. This guide is a part of the scope of delivery, even if the item is resold. This guide is also available on the UPLIFT Desk website: upliftdesk.com. Excerpts or copies may not be forwarded to third parties or used in any other published form without the prior written consent of UPLIFT Desk. These instructions are subject to United States copyright law.